



Mobile warehouse management

isWarehouse

More transparency for your warehouse processes

Features of isWarehouse

Keep track of the current warehouse status and processes - our warehouse application **isWarehouse** is a solution for mobile data collection devices (MDC), which connects to an existing merchandise management system or warehouse management system.

- Mobile warehouse management directly from mobile handheld devices.
- **isWarehouse** is a mobile warehouse application interface between your existing ERP system and your warehouse employees' mobile data collection devices.
- Clear graphic screen dialogue on mobile devices.
- Tailored to match your existing warehouse processes.
- High performance with Online-on-Demand communication.
- No paper lists - fewer sources of error by scanning data.
- High integrative capacity: Interfaces for all conventional ERP systems.

The mobile warehouse solution isWarehouse

Warehouse information, tasks and information on your mobile terminal at the touch of a button

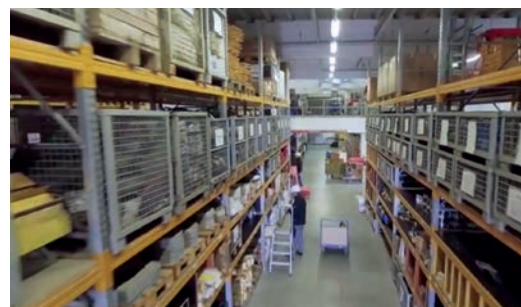
With our mobile warehouse solution **isWarehouse**, you can keep track of all warehouse movements and tasks. With **isWarehouse**, your goods are always exactly where you need them - at the right time and in the right quantity. That's good news for both your warehouse employees and your customers. Using mobile data collection technology accelerates internal warehouse processes and this allows orders to be consigned and delivered quicker.

isWarehouse is not some over-proportioned software with lots of features that are not needed in daily warehouse activities. Instead, it is based on a number of standard modules which suit your exact needs. Clearly structured screens make it simple to reach all the important modules and features with just a few clicks.



The advantages of isWarehouse at a glance:

- Transparent warehouse processes
- Existing resources can be optimised
- Processes are accelerated
- Quicker order processing
- More satisfied customers
- Improved warehouse performance
- Online-on-Demand feature



isWarehouse runs on all kinds of mobile devices. From a simple PDA or forklift terminal to robust devices for deep-freeze areas.

Accelerated warehouse processes

A typical warehouse situation with **isWarehouse**:

With **isWarehouse**, tasks, activities and warehouse information is displayed to warehouse employees on a robust and mobile device. All warehouse movements can be recorded immediately with the mobile terminal's barcode scanner, after which they are made directly available in the overarching ERP system - all without the need to subsequently collate paper lists. This reduces workloads and improves efficiency in typical warehouse processes:

INCOMING GOODS AND STORAGE

Incoming goods are the starting point for any well-functioning warehouse. For each delivery, it should quickly become clear what the purpose of the delivery is and what its contents are. Incoming deliveries can be scanned directly using **isWarehouse**. The software sends all relevant information and immediately recognises whether the delivery is a mistake or whether there is a delay. It is also possible to issue an approval from the mobile device. In the next stage, **isWarehouse** aids with the storage of the new goods. It will show either free storage spaces (for chaotic stock management) or fixed storage spaces, along with their location. Each deposit is booked directly into the overarching merchandise management system, after which the incoming goods are immediately made available for open orders.



CONSIGNMENT

The quick processing of customer orders is crucial for ensuring an efficient warehouse. This increases warehouse performance and competitiveness. Customer orders are sent directly to the warehouse employees' mobile terminals as consignment lists. Consignment is therefore based on orders and is route-optimised. It is also possible to undertake multiple consignments and consignments which follow pre-arranged priority lists.



OUTGOING GOODS

It is possible to print the right shipping label from the mobile terminal as soon as an item has been consigned through a task. Depending on the shipping method, it is also possible to store various label layouts and contact all printers in the network via the mobile device.



CATALOGUING Cataloguing and recording inventory is often a time-consuming process that involves a lot of staff. This often requires long lists, which of course need to be written by hand. Our cataloguing solution **isMobilinvent** provides a paperless cataloguing/inventory process for one or, if desired, several barcode scanning terminals. **isMobilinvent** is a module for **isWarehouse** warehouse management, which can also be used as a stand-alone solution. The stand alone version of **isMobilinvent** is self-sufficient and independent of the ERP system used on various mobile terminals. It is possible to catalogue parallel to daily operations.



A project flow with **isWarehouse**:

Every customer project starts with a plan. Our system advisor will gladly visit you on-site to discuss your system environment and get an idea of your existing processes. This is important because no one project is the same as another and every warehouse is unique. We aim to simplify and accelerate your existing system processes by using our solutions.

Customisable:

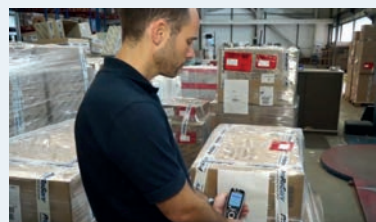
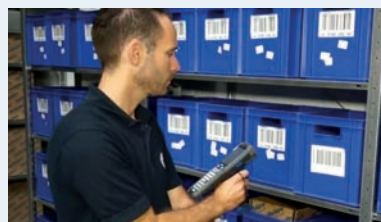
We produce an customised design for you, which we present to you during a visit to our workshop. We can then work with you to adjust it to meet your wishes and expectations.

- Which **isWarehouse** modules are useful for your business?
- Which screens and notifications are useful for your warehouse employees?

This workshop forms the basis for your processes using our mobile warehouse solution **isWarehouse**. Your wish is our command.

Installation and launch:

Installation and launch do not take a long time and your chosen hardware will be adjusted to fit your system environment. We will adjust the network settings, device settings and barcode scanner settings to match your requirements. **isWarehouse** can be expanded with additional modules at any time, allowing it to grow with your business and needs.



■ Incoming goods

■ Storage

■ Consignment

■ Outgoing goods

Online-on-Demand communication

Together with mobile collection technology, **isWarehouse** is the data hub, which exchanges data directly with your ERP system. With the Online-on-Demand feature, **isWarehouse** will only communicate with the overarching ERP system if this is required or possible. This saves resources and ensures quick and smooth workflows on your mobile device. The Online-on-Demand solution also allows the data to be collected and edited without a connection to the ERP system. The unsynchronised data will be transferred as soon as a connection to the ERP system is reestablished.

Features at a glance

Incoming goods isStockReceipt	<ul style="list-style-type: none">Quickly process incoming goods with a barcode scan from mobile devicesPrint incoming goods label
Outgoing goods isGoodsOutput	Control goods with a barcode scan
Storage space management isInformation	<ul style="list-style-type: none">1-n storage locations and spacesStorage space qualification with dimensions and carrying capacity
Transfer isTransfer	Transfer goods with a barcode scan
Storage	<ul style="list-style-type: none">Suggests storage spaceStore by scanning the storage space
Consignment isOrderPicking	<ul style="list-style-type: none">First in first outParallel consignmentPrioritised consignmentValidating the consignment
Storage space/item information isInformation	<ul style="list-style-type: none">Display available itemsDisplay free storage spaces

isWarehouse - manage your warehouse with ease on the go!

A warehouse management software allows the paperless management of all goods movements and it optimises internal warehouse processes. **isWarehouse** is a solution for mobile data collection devices (MDC) and connects to your existing merchandise management system/warehouse management system.

With **isWarehouse**, task lists, activities and warehouse information can be displayed on the warehouse employees' mobile data collection devices at the touch of a button. All goods movements can be recorded immediately on the mobile terminal with the barcode scanner. This avoids the need for subsequently collating paper lists. This always saves a huge amount of time and minimises sources of error.

isWarehouse follows a modular design and can therefore be tailored to suit your needs.



Hauptmenü
1. Einlagerung
2. Umlagerung
3. Kommissionierung
4. Inventur
5. Bestandsauskunft
Auswahl Abmelden

Komm.-Einzeln
Auftrag: 1111
Material: 789012
Text: Test Artikel 2
Lagerort: 4712
Lagerplatz: 01-02-01
F-Bestand: 5
Q-Bestand: 2
Menge: 20
F3 - Liste
Weiter Zurück

Inventur
1. Buchblätter laden
2. Buchblätter anzeigen
3. Erfassung starten
4. Liste anzeigen
5. Liste auf Scanner löschen
6. Liste übertragen
Auswahl Hauptmenü

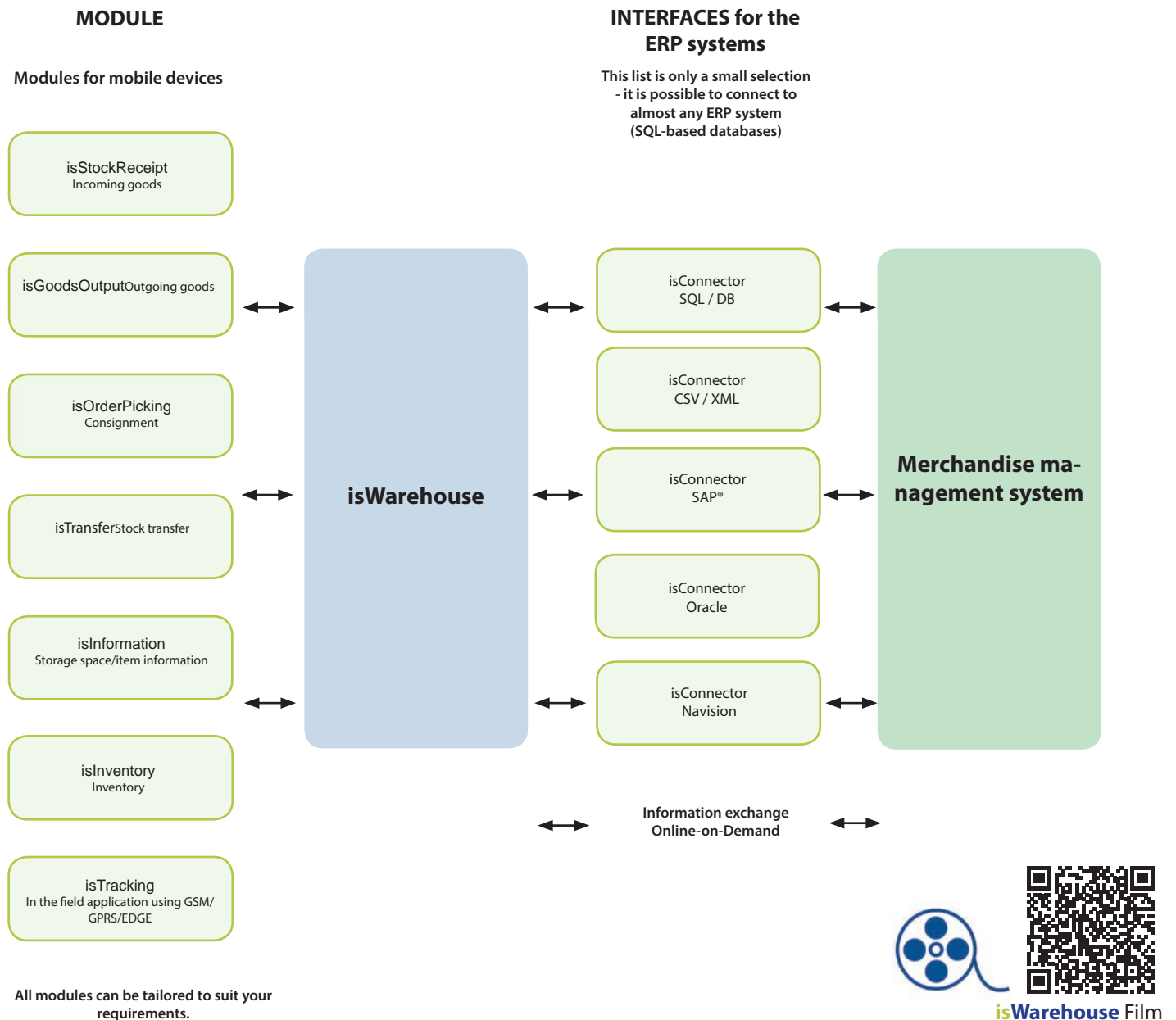
Materialeinga F4 - Leeren
Lieferant:
Beleg-Nr.:
An Kst.: 1241
Lieferdatum: 11.11.2017
Liefersch-Nr.:
Artikel:
Menge-Soll:
Menge-Rest:
Einheit:
Menge-Ist: 0
Weiter Zurück

Clear user interfaces on the mobile terminals allow intuitive and quick use.

(Display view on the mobile device)

isWarehouse - The warehouse solution with a modular design

The mobile warehouse application **isWarehouse** is built in modules. The modules relevant to your needs can be selected as required. This saves investment costs and ensures quick and smooth workflows.



isWarehouse

Just the right amount of warehouse management!

As an IT-logistics system vendor, we are happy to advise you right from the start:
From conceptualisation and hardware selection to installation and launch.



Our services at a glance:



Local or in field mobile data collection

Warehouse management solutions

Marking and barcode solutions

Wireless network technologies for companies

Individually adapted software solutions

RFID technologies

Dedicated Auto-ID service workshop and on-site service

Integer Solutions GmbH is a provider of IT products and solutions related to **marking, identification and tracking**. Our solutions accelerate existing company processes and bring more transparency to existing operations. From advising on programming and integration to training and services, we assist you in process optimisation.

As an IT system vendor for logistics solutions, Integer Solutions provides all technical components, from barcode scanners and mobile data collection terminals to interfaces that match the target system precisely to meet the customer's needs, as well as the right software.

Our solutions and products optimise, for example, processes in warehouse administration, production, callout transactions or events. This is based on mobile and stationary data collection solutions, such as barcode and marking solutions, which are integrated seamlessly into existing company processes with our software modules. We work together with the most renowned manufacturers on the market, such as Zebra, Honeywell, Datalogic etc. and we will gladly assist you in choosing the right device to match your needs.

integer-solutions.com



Integer Solutions GmbH

Industriestraße 4
D-61200 Wölfersheim

☎ +49 6036 - 90 557-0

✉ office@integer-solutions.com

