

# Honeywell Scanning & Mobility



## PD43 Accessory Catalog

**Honeywell**



# Printer/Media Accessories



## Platen Roller

**Part No: 910400024880**

User-installable platen roller for dispensing printed labels.



## Linerless Platen Roller

**Part No: 203-185-500**

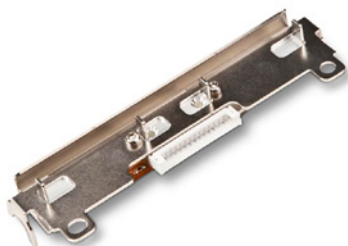
User Installable non-stick platen roller for dispensing printed labels when using linerless media stock.



## Cleaning Card

**Part No: 1-110501-00**

The cleaning card accessory removes adhesive or other contaminants from the printhead or platen roller. It is suggested that a new cleaning card be used with each new roll of media. Box of 25 cleaning cards, each 4.5x6 inches. (All HSM printing models.)



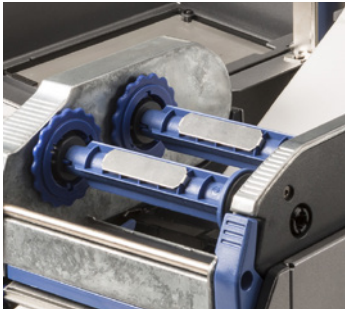
## Printheads

**Part No: 201-031-420 (203 dpi)**  
**201-031-430 (300 dpi)**

User-installable 203 or 300 dpi printhead can be installed on any PD43 and PD43c models. RoHS compliant.



# Printer/Media Accessories



## Ribbon Adapter

**Part No: 225-781-001**

User-installable ribbon adapter enables use of one-inch diameter ribbon cores without notch.



## Label Taken Sensor Module

**Part No: 213-040-001**

User-installable label-taken-sensor provides ability to continue serial printing only after label or ticket is removed from the front of the printer. (All RoHS compliant.)



## Flat Top Window

**Part No: 213-038-001**

The flat-top window is a user-installable, see-through cover installed on the top of the media cover. It allows PD43 to fit into more space-constrained environments.



## Airline Boarding Pass Shelf

**Part No: 203-943-002**

The user-installable, fanfolded boarding pass shelf provides for secure storing of boarding passes, and ensures a safe path toward the print mechanism before being printed.



# Printer/Media Accessories



## Airline Boarding Pass Tray

**Part No: 213-037-001**

The user-installable airline boarding pass tray holds up to twenty boarding passes as they are cut. The tray is attached to the cutter unit.



## Cutter Tray

**Part No: 203-188-100**

The user-installable cutter tray holds up to twenty labels as they are cut. It attaches to the cutter unit.



## Cutter Module

**Part No: 213-036-001**

The user-installable cutter module with label taken sensor (LTS) is programmable for full or partial cuts. (All models RoHS compliant.)



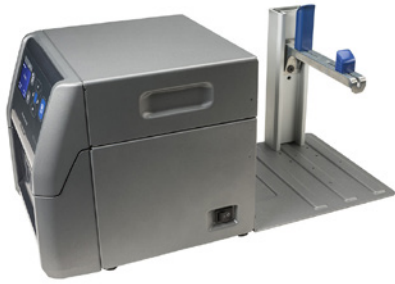
## Label Dispenser

**Part No: 213-034-001**

The user installable Label Dispenser Module with Label Taken Sensor (LTS) strips off the paper backing or liner to present only the label).



# Printer/Media Accessories



## Extended Media Holder

**Part No: 213-035-001**

The extended media holder can be attached to the PD43c, providing a hanger for one media roll. The holder comes with attachment screws and an installation guide.





# Connectivity Accessories



## Ethernet Extension Cable

**Part No: 213-039-001**

User-installable Ethernet extension cable allows for Ethernet connection to be accessible from the back of the printer.  
(All models RoHS compliant.)



## USB to Serial Adapter

**Part No: 213-033-001**

The USB to RS-232 adapter connects the printer's USB Host (Type A) port and provides a serial RS-232 (Female DB9) connectivity. Cable length is 1.8 m (5.9 ft). Serial flow control: Xon/Xoff, RTS/CTS. (All model RoHS compliant.)



## USB to Parallel Adapter

**Part No: 203-182-110**

The USB to Parallel adapter connects to the printer USB host (type A) port and provides Parallel (DB25) connectivity. Cable length is 1.8m. Operations modes: Compatibility, Nibble, Byte (All models, RoHS)



## USB-A to USB-B Cable

**Part No: 321-576-004**

The USB-A to USB-B cable connects the printer's device port (Type B) to a PC Host (Type A) to enable USB connectivity. Cable length is 2 m (6 ft). (All models RoHS compliant.)  
Note: This cable ships standard with each printer.



# Power Accessories



## Power Adapter

**Part No: 203-186-200**

Universal power adapter for PD43c (RoHS compliant).



## AC Power Cords (RoHS Compliant)

Part No	Description
1-974028-025	Americas
1-974027-025	Europe
1-974029-020	UK
321-471-002	Italy
586276	Liechtenstein & Switzerland
321-501-002	Denmark
321-502-002	India & South Africa
071918	China
1-974030-025	Australia

**For more information on our products:**

[www.honeywellaidc.com](http://www.honeywellaidc.com)

**Honeywell Scanning & Mobility**

9680 Old Bailes Road

Fort Mill, SC 29707

800.582.4263

[www.honeywell.com](http://www.honeywell.com)



**Honeywell Partner**

**Integer Solutions GmbH**  
Industriestraße 4, D-61200 Wölfersheim  
Tel.: +49-6036/90557-0  
[www.integer-solutions.com](http://www.integer-solutions.com)

**Honeywell**