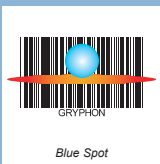




Complete Solution



Blue Spot



RSS &amp; PDF417 Codes



## General Description

Gryphon™ BT 100 and BT200 are two new members of the successful Gryphon™ mobile family. They share the same powerful architecture of the other models with a special addition: the latest innovation in the wireless communication, Bluetooth® technology. This technology provides the operator with wider mobility and no cable constraint. Bluetooth® is a standard defined worldwide, and it allows various devices manufactured by different companies to easily connect and communicate with each other.

The new Gryphon™ BT contains the Datalogic Bluetooth® radio module, which is compliant with the up-to-date Bluetooth® 1.1 standard and can communicate with any PC, Laptop, PDA, mobile phone, printer etc. that includes an embedded Bluetooth® module or an external commercial Bluetooth® dongle. The implemented Bluetooth® profile (i.e. the "protocol" used for communication) is provided by the SPP=Serial Port Profile: the Bluetooth® device is seen by the host like a virtual COM port.

Bluetooth® technology has been added to a first class scanner. Thanks to the state-of-art optics and a decode rate of 270 scans/sec, reading performance in terms of decoding capability and reading quickness makes the Gryphon™ BT very user friendly, intuitive and fast.

Furthermore, the "blue spot" produced by the Gryphon™ BT, provides "good reading" feedback directly on the code and makes the user's job easier, especially in noisy environments.

## Features

- > Bluetooth® 1.1 compliant
- > Virtual COM and keyboard emulation data input
- > High speed data transmission: zero delay
- > RSS symbologies, PDF417 and linear bar code decoding
- > Package contents:
  - Gryphon™ BT
  - C- Gryphon™ Battery Charger
  - CD-ROM Gryphon™ BT
  - Gryphon BT™ Quick Reference

## Applications

- > "Cable replacement" for POS/In-Store
- > Document Handling
- > Shop Inventory Management

## Specifications

### BLUETOOTH RADIO COMMUNICATION

CONFORMITY	R&TTE and Bluetooth 1.1 Qualified 802.11b co-existence
RADIO FREQUENCY	2.4 to 2.48 GHz
COMMUNICATION	SPP (Serial Port Profile) Bluetooth 1.1 compliant
EFFECTIVE RADIATED POWER	Up to 4 dBm transmit power for class 2 operation
BIT RATE	Up to 921 Kbps
RADIO RANGE	10 m in a typical environment

### ELECTRICAL CHARACTERISTICS

POWER SUPPLY	Direct plug-in 9-28 VDC (C-Gryphon™ B/C)
BATTERY TYPE	2 AA NiMh batteries
RECHARGE TIME	4 hours max.
OPERATING AUTONOMY	24,000 reads - NiMh
POWER CONSUMPTION	8W max. (C-Gryphon™ B/C)

### MECHANICAL CHARACTERISTICS

DIMENSIONS	208 x 107 x 55.5 mm
WEIGHT	280 g (Gryphon™ BT with batteries); 250 g (C-Gryphon™ B/C)
CASE MATERIAL	ABS and Polycarbonate, plus co-moulded rubber

### PERFORMANCE

SENSOR	CCD solid state (3648 pixels)
MAX. SCAN RATE	270 scans/sec
MAX. RESOLUTION	0.076 mm (3 mils)
PRINT CONTRAST RATIO (min.)	pcs=15%
INTERFACES	RS232 (C-Gryphon™ B/C)
READING ANGLE	Skew: ±80°; Pitch: 65°; Tilt: ±35° (EAN13, M=0.8, PCS=0.9)
READING INDICATORS	Good Read Blue LED, "Blue spot" on the code, adjustable tone "beeper" (Gryphon™ BT), Battery Charging (red), Charge completed (green), Power (yellow) (C-Gryphon™ B/C)

### ENHANCED FEATURES

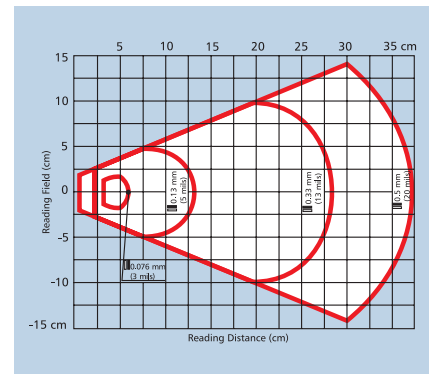
BAR CODES	Puzzle Solver™, data editing and data concatenation RSS variants, 2/5 family, Code 39 (plus Code 32, Cip 39), EAN/UPC, ISBN/ISSN, EAN 128, Code 128, ISBT 128, Code 93, Code 11, CODABAR, TELEPEN, PLESSEY, Code MSI, Code Delta IBM, CODABLOCK, Code 16K, Code 49 PDF 417
-----------	---

BT200 Model	
PROGRAMMING METHOD	Reading special bar codes
Manual	S/W commands through the serial port
Automatic (with RS232)	Windows configuration program
Sm@rtSet™	

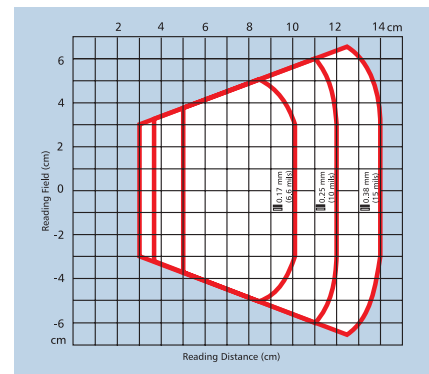
### ENVIRONMENTAL CHARACTERISTICS

DROP RESISTANCE	IEC68-2-32 TEST ED, resists repeated drops from 1.8m onto a concrete surface
OPERATING TEMPERATURE	0 to 40° C (32 to 104° F)
STORAGE TEMPERATURE	-20 to 70° C (-4 to 158° F)
AMBIENT LIGHT CONDITIONS	Up to 100.000 lux
HUMIDITY	90% non condensing
ENVIRONMENTAL PROTECTION	IP30

## Reading Diagrams



Standard reading zone



PDF417 reading zone

## Connectivity



The introduction of Bluetooth® technology offers a wireless cost-effective solution when mobility is required. The Gryphon™ bar code reader can be connected to mobile computers, printers, mobile phones and other Bluetooth® compliant devices. The new Gryphon™ BT provides new application possibilities. A bar code reader can now be used, for example, in mobile shopping applications by simply transmitting data to a Laptop or a PDA.

Bluetooth® is a standard communication protocol that provides full connectivity between various devices. It guarantees quick and reliable communication and data transmission.



Product and Company names and logos referenced may be either trademarks or registered trademarks of their respective companies. We reserve the right to make modifications and improvements.

